

The background is a dark blue gradient with several large, semi-transparent, overlapping oval shapes. A bright white light source in the upper right corner creates a lens flare effect, with rays of light and a circular halo. There are also some smaller, faint circular elements scattered across the scene.

kubaid.com

Kubald...

... a name that stands for quality, faithfulness to deadlines and fair market prices in the production and development of signware and illuminated advertising equipment.



Europe-wide, the corporation has made a name for itself, and ranks among the leading suppliers of signware and petrol station fittings and equipment. For us, this is motivation and spur to improve good results even further and enhance customer satisfaction.

Experts in Signware since 1935

Founded in 1935, Kubald is a leading supplier of signware and illuminated advertising throughout Europe. More than 150 employees develop comprehensive solutions for our company's customers – from planning to production, from consulting to complete design, from research and development through fitting to the maintenance of existing installations.

Always at the agreed date and always at the highest quality!
Whatever Kubald may be doing for you: we will not be satisfied before you are.

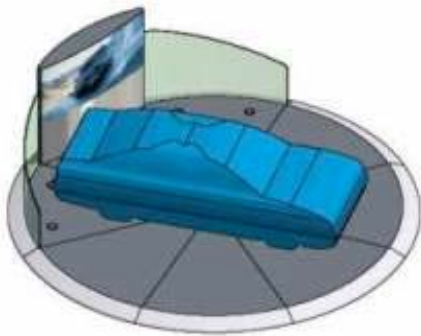


Making brands visible

No matter what your plans are - from new constructions to fitting or re-fitting your outlets - we will put your requests and conceptions into action. Our employees are trained to handle and implement even the most complex design programs.

Our services comprise the complete range of illuminated advertising and signware, also including panellings for buildings, shop concepts, shop and counter design and installation.

And all this in more than 30 countries.



One Stop Solutions

Kubald offers full service for signware and illuminated advertising – from planning to installation and maintenance, from refurbishing of existing systems to research and development in entirely new technologies. Kubald is your competent and reliable partner.

Our project management comprises the construction and production as well as all tasks concerning electricity, cleaning, painting, grounding and construction works.



Consulting / Planning	Model / Prototype making	Research / Development	Single-Part / Serial	Production	Projectmanagement	Graphics & Design	Digital Survey	Obtaining approvals	Installation	Maintenance & Cleaning	Replacement-Procurement	Recycling / Disposal
-----------------------	--------------------------	------------------------	----------------------	------------	-------------------	-------------------	----------------	---------------------	--------------	------------------------	-------------------------	----------------------

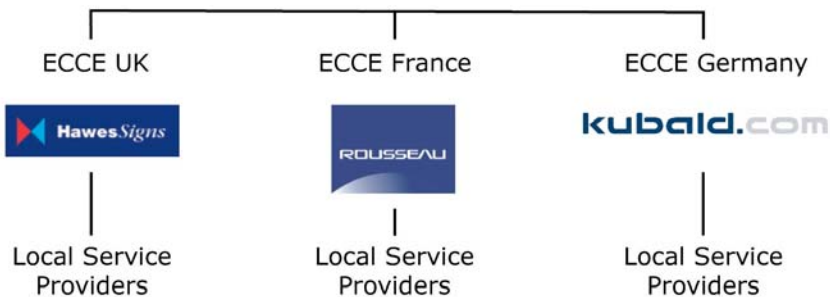
Our success can be seen everywhere: major brands from different lines of business – mainly from the mineral oil, automotive, banking, retail and system catering sectors.

Cooperations & Partnerships

Joint venture of **Hawes Sign Ltd (UK)**, **Rousseau S.A. (F)** and **Kubald GmbH (GER)** – involving three major European signware companies operating their own manufacturing plants in the UK, France and Germany, and supply partners in LCCs (Turkey, Slovakia and China).



ECCE International is the only organization of its kind, operating a worldwide installation network with international partners. ECCE means more than 100 m€ in turnover, more than 700 employees and over 200 years of experience.



ECCE International

Main Partners

- ECCE UK
- ECCE France
- ECCE Germany



Local Service Providers

- Neon Design
- OTM
- Neon Bassano
- Frontwork
- DCP
- Sistem Reklamcilik
- Fotep
- Hantons / Ross
- Taylor Signs
- Dikta / Logoflex
- Alustart
- Brand Factory
- Acis
- Springmar
- Rohé



Company

Products & Performance

Certificates

References

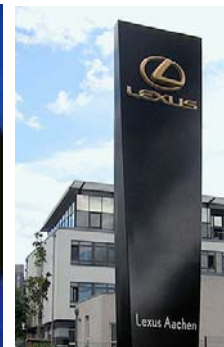
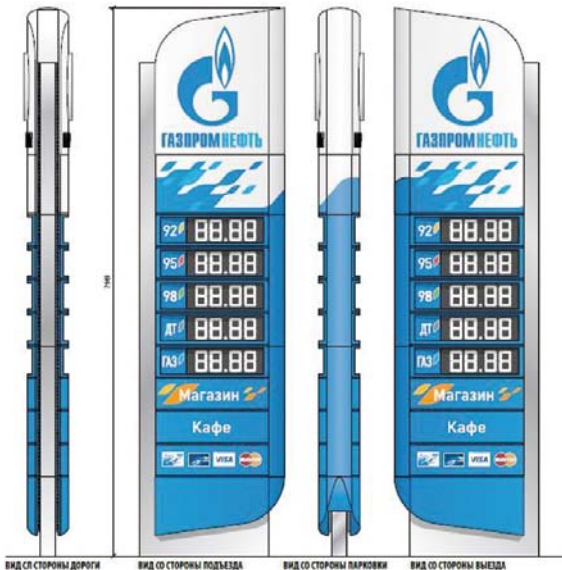
Global Associates

- Sloan Led, USA
- Midwest Signs, USA
- Iberplas, Brasil
- Emirates Neon, UAE
- Sistem Reklamcilik, Turkey
- Innovative Sign Vision, India
- New Age Media Inc., Pakistan
- Craft Signs, South Africa
- Asahi Etic, Japan
- Rising Son Image Corp., China
- Kubald Russia / ACIS, Russia
- Albert Smith Signs, Australia/Pacific



Products

- Signware
- Fitting of Petrol Stations
- Fitting of Automotive Vendors
- Information Systems
- Highrise Monuments
- Displays & Signware
- Shop Fittings
- Steel-, Metal- & Aluminium-Construction
- Flexface Signs
- LED-Displays & LED-Technologies
- High Voltage Neon
- Lightboxes
- Projecting Signs
- Acrylic Processing
- Acrylic Letters
- Acrylic Signs & Covers
- Special Designs



Services

- Consulting, Planing,
- Consulting on Building Legislation
- Model-making
- Prototyping
- Research & Development

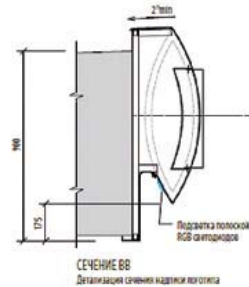
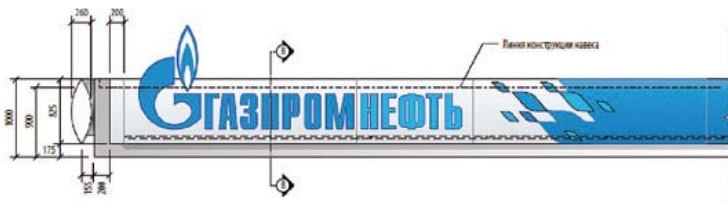
- Digital Survey
- Obtaining Permissions and Approvals
- Structural Calculations
- Installation
- Re-equipment
- Refitting
- Maintenance
- Cleaning
- Warehousing
- Replacement/Procurement
- Recycling and Waste Disposal



- Project management
- Single-unit & Serial Production
- Graphics & Design

Research & Development

Seeing ourselves not just as suppliers, but also as consultants, we will place our technical know how at your disposal in the planning phase – and even during the preparatory phase of your project planning.



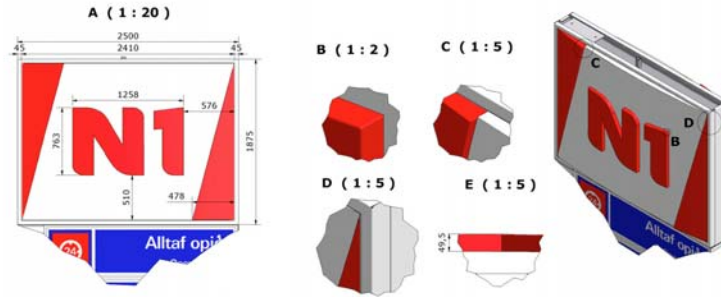
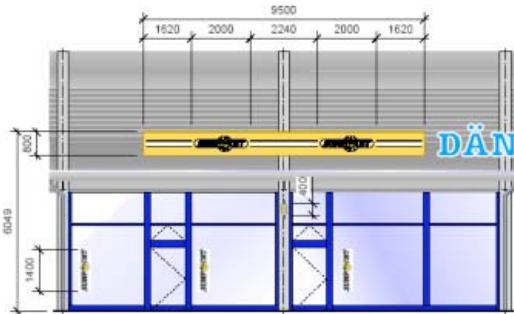
Not least thanks to our research and development division which already devised numerous product innovations, satisfactory and feasible technical solutions are always found.



Digital Survey

A professional survey is the basis for an end product manufactured to fit, for problem-free installation, and for the best possible visual effect of the signware.

Long years of experience of our qualified staff and the latest computer technology are a good basis for excellent results.



Our survey team measures, takes photographs and comments any fact on the site. The recorded data will be sent to our works for immediate further processing.

Prototyping

Based on the design documentation, true-to-scale prototypes are manufactured – quite often consisting of single, custom-made units.

Such precision in our preliminary work is the basis for high quality results in serial production and will **guarantee the highest degree of customer satisfaction.**



Metal processing

At company headquarters in Neustadt/ Germany alone, the production area occupies over 25,000 m² of floor space. **The prefabrication of metal, steel and aluminium elements, as well as individual surface treatment and finishing**, cover the metal working activities in the production cycle.

Structural elements with particularly strong ratings, such as supporting profiled steel substructures for pylons or monoliths are fabricated at our own **steel engineering facilities**.

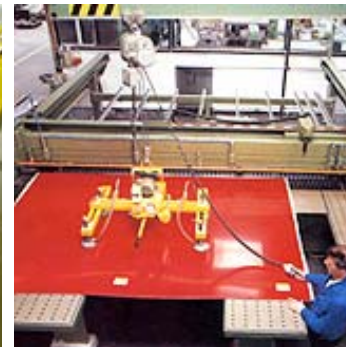
Kubald's own **powder coating facility** meets all demands. Powder coating is environment-friendly, cost-effective, anti-corrosive and weather-resistant, gives surface hardness and can be realized in a wide range of colours.



Plastics processing

In the plastic processing facilities, all technical parts are formed and processed from **semi-finished thermoplastics**, including new high performance materials of very high ratings, such as fiberglass-reinforced plastics.

These semi-finished products can be processed by machining, thermo-forming, bonding, welding, CNC lasermachining, milling, edge-processing (smoothing or polishing) or surface finishing (screen printing/varnishing).

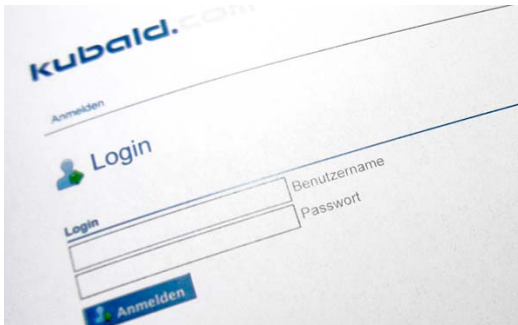


Transparent Project Management with Kubald's *myProjects*

The pages of our web-based project control tool **myProjects** offer customers access to all important project data, such as time and operations scheduling, production status or estimated delivery dates.

Right from the start, our comprehensive control and coordinating concept will guarantee that all interfaces are effectively linked and no long waiting times can build up, making sure that your orders are always processed and completed on schedule.

After conclusion of the project, we will provide you with a clear and comprehensive documentation, enabling you, even years later, to trace all relevant data in a fast and targeted manner.



Installation & Maintenance

Our service and installation teams are familiar with the conditions prevailing in each individual country.

Regular training, in particular with regard to safety standards, sharpens the awareness of our employees and raises the sense of personal responsibility and safety-consciousness in their work.

All installation work is based on the relevant installation manuals as well as on international industrial regulations (SCC) and, where required, on the safety standards specified by our customers, such as SHE, HSSE or OIMS.



Certificates

- DIN EN ISO 9001:2008
- DIN EN 729-3
- SCC**
- HSSE
- DIN EN ISO 14001:2009



DIN EN ISO 9001:2008

DIN EN ISO 9001:2008 standard specifications include requirements to be met by quality management systems that apply to all sectors of the industry.

ISO 9001 standard specifications cover the contractual relationship between customer and supplier. They are universally valid and applicable to all lines of business.

Companies bringing their quality management systems seriously and consistently into line with ISO 9001 specifications will benefit from the systemic approach and contents of this standard. The application of the standard demonstrably leads to continued improvements, a decrease of processing and non-conformance costs, as well as to a better motivation of employees and an increased customer satisfaction.



SCC Certification**

SCC certification presents companies with a possibility to influence the health-, safety- and environment-related performance of contracting parties in the heavy industry. Communication problems between contracting parties are avoided by comparable management systems being applied.



The already very high standard prevailing in the mineral oil and other sectors of the industry in terms of health, safety and environment-consciousness can be further increased. SCC certifications can be obtained in combination with other certificates (such as DIN EN ISO 9001:2000 or DIN EN ISO 14001: 2006).

Experience shows that improving the safety awareness of employees can significantly reduce industrial accident rates.

DIN EN ISO 14001:2009

DIN EN ISO 14001-2009 determines worldwide accepted requirements for environmental protection.

DIN ISO 14001 focusses on a continuous process of improvement. Organisations are responsible for setting their own targets and performance measures, with the standard serving to assist them in meeting objectives and goals and the subsequent monitoring and measurement of these. This process relies on the method Plan-Do-Check-Act.

DIN ISO 14001 demands absolute compliance with environmental commitments the companies imposed upon themselves. Certainly, this environmental policy has to observe actual legal regularities.

Kubald is aware of its responsibility for the environment and we are working on a constant reduction of our products' impact on the environment.



Roll-out-Projects / References

2010

2009

2008

2007

2006

2005

2004



Gazprom Neft

Project start for delivery of 84 totems in new design within 4 months



Roll-out-Projects / References

2009

2008

2007

2006

2005

2004

2003



McDonald's

Supplier of the new McDonald's Drive Through (DT) Project



Roll-out-Projects / References

2008



SHELL

Worldwide supplier of all new CI elements
Shell RVI Evolution

2007



MAN

Worldwide supplier of dealer equipments

2006

2005



BP

European supplier for CI elements

2004

2003

2002



Roll-out-Projects / References

2007



Esso

Renewal of existing contracts for all CI elements for Europe, incl. Scandinavia

2006



SCANIA

Scania

Worldwide Supplier of all CI elements

2005

2004



McDonald's

Supplier of the complete CI product range for McDonald's & McCafé

2003

2002

2001



Roll-out-Projects / References

2006



SHELL

600 stations re-equipped with „Red Bar“
in Turkey

2005

2004

2003



PETROM

75 Petrom stations in Romania

2002

2001

2000



Roll-out-Projects / References

2006

2005

2004

2003

2002

2001

2000



Lexus

340 dealers equipped all over Europe within three years



Toyota

300 dealers equipped in Scandinavia within two years



Roll-out-Projects / References

2006



Linde Gas

31 stations re-equipped in Germany within three years

2005



Credit Suisse

142 objects with more than 1100 individual elements within six months

2004

2003



O₂

250 shop displays within three months

2002

2001

2000



Roll-out-Projects / References

2006

2005

2004

2003

2002

2001

2000



OMV

120 stations in Bosnia, Slovakia and Croatia



Nissan

200 dealers equipped in Germany



Roll-out-Projects / References

2006

2005

2004

2003

2002

2001

2000



ARAL

1.990 shops re-equipped including Tower elements



Total/Elf

230 stations re-equipped from Elf to Total



Roll-out-Projects / References

2006



Q8/BP

40 stations re-branded from BP to Q8

2005

2004

2003



OMV/Aral

250 stations re-branded from Aral to OMV

2002

2001

2000



Roll-out-Projects / References

2006



OMV/Shell

60 stations re-branded from Shell to OMV

2005

2004

2003

2002



Total/Fina

100 stations re-branded from Fina to Total in nine months

2001

2000



Roll-out-Projects / References

2006

2005

2004

2003

2002

2001

2000



Esso

150 „Image Upgrading Projects“ realized in five months



Q8/Aral

250 stations re-branded from Aral to Q8 in Belgium



Roll-out-Projects / References

2006



MAN

140 pylons in six weeks

2005



TEXACO

20 stations in two weeks

2004

2003



Total/Fina

150 stations in five months

2002

2001

2000



References



Company

Products & Performance

Certificates

References

Contact



Kubald GmbH
Kubald Allee 2 · 31535 Neustadt · Germany
Tel. +49 5032 896-0
Fax +49 5032 896-999

sales@kubald.com

www.kubald.com

Thank you for your interest in Kubald GmbH

kubald.com